



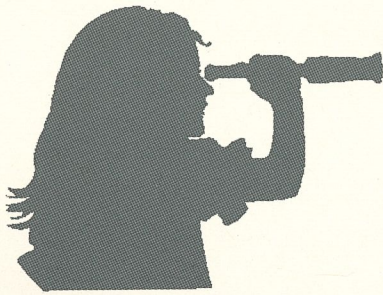
July 2002
Issue No. #82

Historical
Roller Skating

Overview

National Museum
of Roller Skating





Curator's Column

By Deborah L. Wallis,
Director and Curator

With this issue, our readers will see some additions and changes in the format of the Overview. With these changes, we hope to give our readers a good overview of what is happening in their museum. Look for more

changes in future issues and please let us know what you do and do not like.

The museum is gearing up for the National Speed and Roller Figure Skating Championships later this month and the museum will have extended hours during the championships. We will be open our normal hours of Monday - Friday from 9 am to 5 pm plus on Saturdays July 27, August 3 and 10 from 12 pm to 4 pm and on Sundays July 28, August 4 and 11 from 1 pm to 5 pm. If you are in Lincoln for the competitions, make a point to come see your museum.

The museum was recently contacted by the Wright Experience. They are recreating the prototypes designed by Orville and Wilbur Wright to solve the problems of flight. The group is using the brothers' original designs, photos and notes to make the reproductions. The museum was contacted because the Wright Brothers used wheel units from the Henley roller skates for wheels on one of their prototypes. (To see a Henley skate just look at the skate in the museum's logo.) The group asked for photos and measurements of the Henley wheel units to recreate them for the prototype. Who would have guessed that roller skating was connected to history of human flight? To learn more about the project, go to their website at www.wrightexperience.com.

Both Caroline Mirelli and Rose Martin identified the cover photo on the April 2002 issue as Betty Lytle, the famed skater from the 1940s and 1950s. Thanks so much to both Caroline and Rose for helping us identify the photo. This issue's cover photo is from C.W. Lowe Jr. The two cars were advertising the Lowe's traveling rink during its stop in Hiawatha, Kansas in 1917.

Wishing you all a great summer.



Charlotte Groves at the 2000 RSA convention

In May the museum lost one of our board members. Charlotte Groves from Marysville, Washington, died on Saturday May 25, 2002. Charlotte was a former competitor, coach and rink owner. She had been a member of the museum since 1990 and had served on the museum's board for several years as one of the RSA representatives. Charlotte was a dear sweet lady. All of us at the museum miss her greatly.

National Museum of Roller Skating
4730 South Street
Lincoln, NE 68506
Phone: 402/483-7551 x16
Fax: 402/483-1465
www.rollerskatingmuseum.com
postmaster@rollerskatingmuseum.com

Museum Hours

9 am to 5 pm, Monday thru Friday
Closed holidays and weekends.

Mission Statement: The museum exists as an autonomous entity, to acquire, preserve, research and interpret the history of roller skating through its collection of artifacts, photographs, archival material and other skating memorabilia. It strives to document roller skating's historical progression, current status and its future development in context of the associated people and events.

Board of Directors

President, Bert Anselmi
Vice-President, Chester Fried
Sec-Treas, George Pickard
Annelle Anderson, Nellie Anderson
Lillie, Frank Cernik, John Chrien,
Marvin Facher, Mills Lynn, Dave
Schafer, Gordon Van Roekel, Charles
Wahlig and Edmund Young

Trustee Emeritii:

Michael Brooslin, James Turner and
Scott Wilhite

Honorary Trustees:

Irwin Rosee and RSA Chapter
Chairpersons

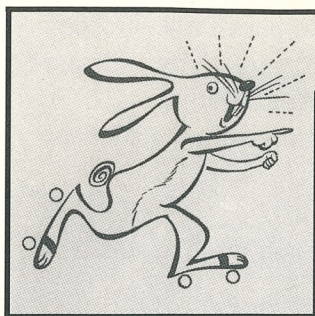
Staff

Deborah L. Wallis
Director and Curator
Jennifer Cook
Assistant Curator

Emily Dust and Mara Linskey

Interns

Historical Roller Skating Overview ISSN
0896-1379 ©2002 is published quarterly for
members of the National Museum of Roller
Skating. It is available only through
membership in the museum. Minimum
annual contribution is \$35. Send
correspondence and change of address to
National Museum of Roller Skating, 4730
South Street, Suite 2, Lincoln, Nebraska
68506 USA.



FEATURE ARTICLE

The Bug that Bites:

Roller Rink Sticker Collecting

by Sarah Webber, former Assistant Curator

Skate boxes became popular with roller skaters in the first half of the twentieth century. Numerous manufacturers produced skate boxes to use as a convenient and safe way for people to carry their skates to the roller rink. Some companies, such as Champion Skates Cases in Omaha, Nebraska, created several styles



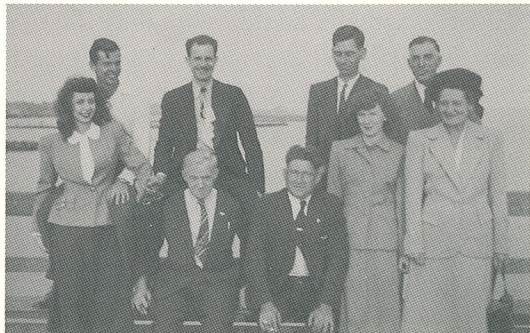
An 1953 ad for a skate case from Gateway Luggage Co.



An 1952 ad for a Herculean skate case.

in steel and a variety of colors with a variety of designs on them. Other manufacturers, like Cub Skate Cases in Council Bluffs, Iowa, produced cases with less elaborate designs but in numerous colors and materials. Regardless whether the manufacturer incorporated designs on to the skate box, many roller skaters took to decorating their skate box with free stickers given out by roller rinks. For some skaters, acquiring rink stickers became a collecting passion, not simply a way to decorate one's skate box.

Sticker collecting skaters stopped putting rink stickers on their boxes and started saving them in



Participants from the first URSSE convention in October 1948.

photo albums or loose-leaf binders. In 1948, a group of twenty-two devoted roller rink sticker collectors formed a club, calling themselves the Universal Roller Skating Sticker Exchange or the URSSE for short. Members of the newly formed group held their first annual convention at the Gay Blades Roller Rink in New York City in early October of that year. At this convention, as with subsequent conventions, members of the URSSE swapped their stickers with other collectors.

Membership in the non-profit URSSE cost \$1.00 a year in dues. Members received with their dues club stickers, emblems, mailings and membership lists. By becoming a member of the URSSE, collectors learned the names and addresses of other members interested in collecting. Members of the club wrote each other to trade stickers, sending 5 to 10 different duplicates to another trader, who then sent ten different ones back. Collectors stamped or wrote their names and address on the back of the stickers they traded to let other collectors know which stickers they already possessed. However, if a URSSE sticker collector had an "XX" over their name on the backs of stickers, other members were not allowed to trade with them. Members earned "the mark of the Blacklist" by trading their stickers with non-members of the URSSE. For example in the 1952 *Roller Skating Almanac*, the



Sticker from the first URSSE convention

URSSE named a collector who was not a member of the URSSE and, in fact, had refused to become a member. The URSSE requested that its members not trade with him or risk losing their privilege of trading with others in the club. Members could also gain an "XX" over their names by not answering their mail promptly.

Roller rink sticker collectors acquired stickers through attending the annual conventions of the



Sticker from the 1950 URSSE convention

USSRE, through writing other URSSE members and directly from rinks they never visited by writing rinks and asking them to send stickers. The URSSE asked members to provide rinks with a stamped, self-addressed envelope when requesting stickers through the mail. Members were also asked to enclose a few stickers from rinks in their hometowns, as rink operators appreciated having them and posting the stickers on bulleting boards in their rinks.

Although the URSSE put the same dollar amount on all rink stickers, collectors placed higher



A six color oval sticker from the Rainbow Roller Rink in Cheyenne, Wyoming.

collecting value on certain types of rink stickers. Roller rink stickers, called "pasters" by collectors, ranged in quality from cheap to costly. Determinants for the collecting value of stickers

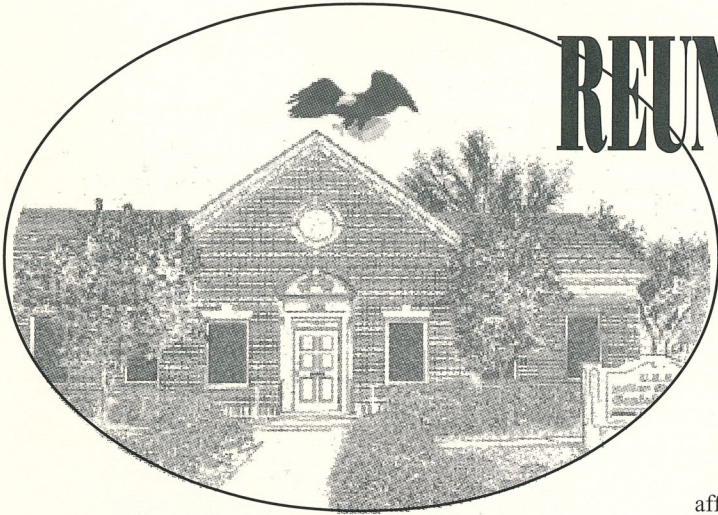


A square one color sticker from the Silver Lake Rink in the State of Washington

included the shape of the sticker and how many colors were used in the design. Stickers with shape to them, those non-square or oval, and ones using more than two colors were deemed of high collecting value. Stickers from foreign countries, commemorating special events or of a unique shape, design or color made even a small collection stand out.

According to Hal V. Fields, Secretary and Treasurer of the Universal Roller Skating Sticker Exchange in 1952, "roller rink sticker collecting is more of a disease than a hobby and once the bug bites you, you'll never get away." Many collectors were bitten by this bug, as numerous collectors boasted possessing thousands of stickers in their collections. Fred Stone of Brooklyn perhaps held the most in 1950 with 4,500 roller rink stickers.

The URSSE originally started with only 22 members; by 1950 it had grown to 230. Between 1948 and 1980, over 4,000 sticker collectors from 48 states and 5 foreign countries, including England, Australia and Canada, were members. Due to declining membership, the URSSE members voted to disband the organization during their annual convention on July 29, 1989.



REUNION OF CHAMPIONS

**CELEBRATING 40th ANNIVERSARY of the
FIRST NATIONALS IN LINCOLN, NEBRASKA
1962-2002**

For 65 years USA Roller Sports has conducted National Championships for the nation's finest roller skating competitors, beginning in 1937 at Arena Gardens in Detroit, Michigan. While the name over the marquee has changed several times over the years, from RSROA to USFARS to USACRS to USA Roller Skating and now to USA Roller Sports, this prestigious event has been attended by an unbroken stream of athletes coming to the Nationals seeking affirmation of their accomplishments. Over a hundred thousand of the nation's finest roller skaters have competed for national titles, the best of

these coming away victorious with bronze, silver and gold medals in one or more of these events: figure skating, singles, pairs, dance, individual speed, relays and roller hockey.

This year marks the 20th time that the Nationals have been hosted by the City of Lincoln, Nebraska, and at the same time is the 40th anniversary of Lincoln's first such event in Pershing Auditorium.

Headquarters for United States competitive roller skating was established in Lincoln more than three decades ago. The National Museum of Roller Skating and the Sport Hall of Fame is also located in Lincoln.

When will there be a better time or opportunity than 2002 for you to revisit roller skating's mecca than during these nationals? Be there! Renew old friendships and celebrate your sport's roots, and acknowledge that roller skating has made a contribution to the enrichment your life.

- **Do you wonder if time has been as kind to your skating contemporaries as it has to you? For many, this can be a form of high school reunion.**
- **When did you last have a chance to mix with the dozens of close friends developed during your competitive years?**
- **Are you a bit curious about how your sport's techniques have evolved?**
- **Are there warm feelings that wrap around your memories of competitive experiences and travels?**

Let our first Nationals Alumni Reunion provide the answers to these questions.

Alumni Dinner on Monday, August 5, 2002	Cornhusker Hotel, Lincoln, Nebraska 2002 Hall of Fame Athlete Awards.
Evenings August 6 and 7	Finals for World Class Figure Skating Events (Artistic) and selection of 2002 USA World Championship Team.
Morning and Afternoon August 6 -7	Visit National Roller Skating Museum and Roller Skating Hall of Fame, view old Nationals videos.

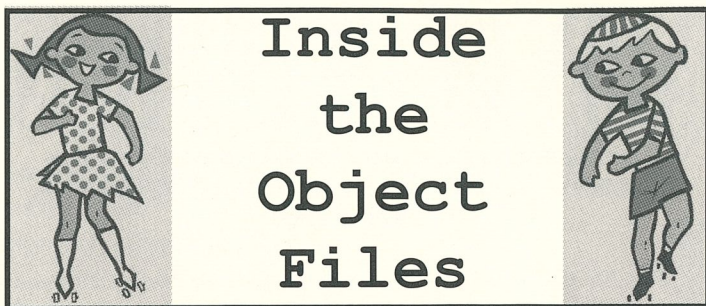
Alumni is defined as anyone who medalled (gold, silver or bronze) in any discipline (figure, speed or hockey) in any event of a National Roller Skating Championships.

A \$25 registration fee will provide the following: Alumni Dinner for August 5, tickets for the final 3 days of the Artistic National Championships, including World Class Night, special skating exhibitions (Fours), a 40th anniversary pin and other souvenirs of the event.

A photograph exhibit will be set up at Pershing Auditorium, entitled "Wall of Champions" and will feature photos provided by alumni, listing name and titles won.

INTERESTED? - Register today! Pass the word along to your other competitor friends/current or former skating pupils. The hardest part of this task is making contact with those out of skating for decades. Help us out!

CONTACT: Deborah Wallis, Museum Curator, 4730 South Street, Lincoln, NE 68506
Phone: 402-483-7551 • e-mail: directorcurator@rollerskatingmuseum.com



Inside the Object Files

By Jennifer Cook, Assistant Curator

We have been conducting a complete inventory of the museum's collection for the past nine months, and during that time we have come across many interesting objects. This new column will highlight a different group of artifacts each issue, and we begin with one of my favorite collections, stickers.

The museum has thousands of stickers in its collection spanning over a half century of roller

skating history. The bulk of the collection are stickers advertising a specific rink, but we also have numerous stickers from World, National, Regional and State Competitions, various organizations, skating clubs from the United States and around the world, manufacturers and conventions.

A large portion of the stickers in our collection were donated by former Universal Roller Skating Sticker Exchange members. Others were gifts of companies, organizations, and skating enthusiasts.

New stickers are donated to the collection on a regular basis, and these stickers are a wonderful addition to our skating knowledge.

Recent Donations

Jeff Aurich, Washington, D.C., *1996 Nationals photograph and 1996 Gold medal*

Kelly Bennett, Brentwood, California, *1996 Nationals photograph*

Gigi Boyd, Lincoln, Nebraska, *Photographs*

Charemon Castaneda, Springfield, Missouri, *Pair of skates and skate case*

Jennifer Cook, Lincoln, Nebraska, *Magazines and toys*

Chester Fried, South River, New Jersey, *1940s Newspaper, photos and "1st In-Line" book*

Joe Jaffe, Conyers, Georgia, *USAC/RS Plaque and 1962 Worlds award*

Bernard Jast, Elizabeth, New Jersey, *1999 NARSA National Championships program*

John Kaduck, Cleveland, Ohio, *Early 20th century vaudeville posters*

Karen Lepish, Middleburg Heights, Ohio, *roller skating ceramics, dolls, and records (LPs)*

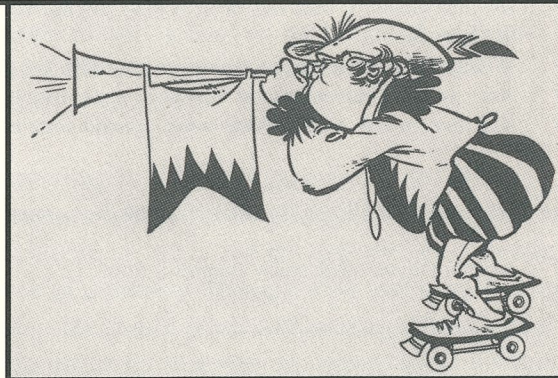
Caroline Mirelli, Memphis, Tennessee, *magazine and 1958 newspaper article*

Judith Morrow, San Carlos, California, *Vaudeville photographs, programs and rink stickers*

George Pickard, Lincoln, Nebraska, *Betty Boop tin sign, photographs, magazines and rink material*

Tammy Gantz Patino, Glendale, California, *Video tape*

Jim Pollard, Redwood City, California, *Japan Roller Skating Federation material*



Randall's, DuQuoin, Illinois, *Nationals photographs (various years)*

Marlene Schafer, Cerritos, California, *rink patches*

Marvin Stayman, Clawson, Michigan, *1940s Newspaper articles*

Perry Stebe, New Albany, Indiana, *"The Rawson System of Skating" booklets*

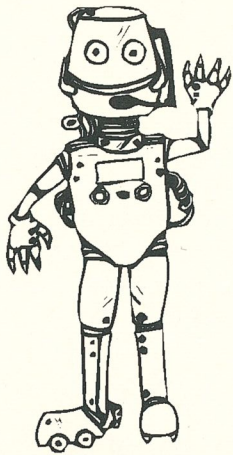
Virginia Wadleigh, Cheyenne, Wyoming, *Roller skating queen photographs*

Deborah Wallis, Lincoln, Nebraska, *USARS Nationals and RSA Convention materials*

Sandra Lee Wollin, Crystal River, Florida, *Skating dress*

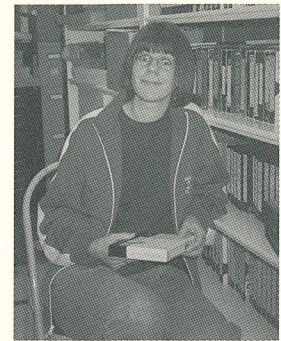
Mike Yohnicki, London, Ontario, Canada, *Roller Derby archival material*

Mike Zaidman, West Palm Beach, Florida, *Photographs and skate key chain*

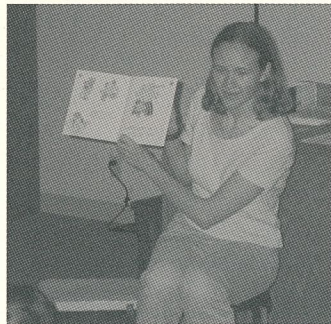


Museum Interns

The Museum is lucky enough to have two interns this summer. Mara Linskey and Emily Dust, both graduate students in the Museum Studies program at the University of Nebraska-Lincoln, are spending the summer with us. Mara is focusing on collections management for her internship. She has been processing archival collections, inventorying our costume and video collections and working on updating our roller rink sticker exhibit. Emily is focusing on exhibits and education for her internship. She has developed a tour for pre-school through first grade students, updated our roller figure and speed exhibits and is developing new educational activities for families visiting the museum.



Mara inventorying the museum's video collection.



Emily giving a tour to pre-school age children.



Emily researching for the new Speed Skating exhibit.



Mara organizing an archival collection.



Tours



The museum has developed a new tour for pre-school through first grade children. The tour starts with the reading of a storybook with roller skating as its theme followed by game of memory using images from the book for the cards. The students also



Students playing a game of memory during their museum tour.



Students looking for matches during a game of memory at the museum.

get the opportunity touch and feel skating items in our educational collection. The final activity is a game of hide and seek where the students must find hidden roller skating toys in the museum's exhibits. If you would like to schedule a tour, please contact the museum.

Raffle Round Up

The National Museum of Roller Skating's 2002 raffle was a success. The raffle drawing took place during the President's dinner at the Roller Skating Association-International's annual convention and tradeshow on May 15. Six ladies attending the dinner, JoAnn Honegger, Stephanie Magliato, Sandy Marciani, Dorothy McDonald and Danika Torries, drew the twenty-four cash prizewinners from the raffle drum. Fourteen of the winners were present at the dinner to pick up their cash prizes. The grandchildren of Bert and Lynn Anselmi won the \$1,000 prize plus one of the \$100 prizes. Lucky Courtney Ruidiaz, daughter of Charlene Conway, won the \$5,000 grand prize. Bert Anselmi, Museum Board President, sold the most tickets and was awarded the Robert Bollinger Ticket Seller Award.

The \$100 winners were: Frank Young, Floyd A. Terry, Alexandria Ruidiaz, M. Burgermeister, Linda Adams, The Anselmi Grandchildren, Roxee Carlson, Ron Martin, Willie Trent, JBL Trinity, Howard "Bud" Engle, Rose L. Martin, Charles Manning, Richard Jones and Chris Cohen. Both Bud Engle and Rose Martin generously donated their winnings back to the museum. The \$250 winners were Susan Perkins, Les and Joan Diener and the RSA Section 12, which won two of the \$250 prizes. The \$500 winners were Clark Brown, David Ramsey and Jim Means.

Thanks to the tireless support of thirty-two individuals, the museum reached our goal of selling a total of 500 tickets. The museum would like to express our sincere appreciation to the following individuals for supporting the museum by selling raffle tickets. Annelle Anderson, Cindy Anderson, Nellie Anderson Lillie, Bert Anselmi, Kevin Baker, Bob Bollinger, Bobby Braun, Dianne Braun, Dan Brown, Rick Carson, Christian Chin, John Chrien, Jennifer Cook, Marvin Facher, Chester Fried, Charlotte Groves, Shawn Jones, Scott Lehr, Mills Lynn, Kiley McCreedy, Jason Nelson, George Pickard, Budd Van Roekel, RSA's Section 12, Dave Schafer, Charles Wahlig, Doug Warren, Ed Young and Peggy Young.

The museum's raffle would not have taken place without the generosity of all the individuals who brought tickets. On behalf of the museum's board of trustees, thank you to the entire 2002 raffle ticket buyers. We greatly appreciate your support and we extend to you our sincere gratitude.

Frank Torries & Maxie	Jack Becker	Kim Brown	Jeff Cohen	Mike Dorak
Dolores & Roger Adams	Nancy Becker	L R Brown (3)	Al Combs	Myra Dria
Linda Adams	Ann Behan	Scott Buckner	Sissie K. Combs	Grandma & Ely Dunham
Rock Allman	Ron Beilsten	M. Burgermeister	Tripp Combs	Arthur H. Durand
American on Wheels Real Estate, LLC	Anita Bennett	Brenda Butera	Concepts	John & Gail Easton
Jim & Cindy Anderson	Luther & Joanne Berstein	Carol Caldwell	Charlene Conway	Mike Edelman (2)
Kristi Anderson	John Bing (2)	Timothy & Mary Margaret Campbell	Conway Roller Rink	Kim & Connie
Bob & Annelle Anderson	Larry Bishop	Karen Campbell (2)	Judy & Neil Cook	Eisenzimmer (2)
Robert Anderson Jr	Alan Blizard	Stan Cantor	Maurice Cooper	Becky Engbrecht
Anonymous	Bob & Rick	Buckee Carlson	Jeff Couey (2)	Bruce Engbrecht
Anselmi Grandchildren (6)	Ed & Barbara Bolton	Chewee Carlson	Leita Couey (3)	Howard Engle (4)
Kurt Anselmi	Bonadventure Skating Center (4)	Robert Castro	Gretchen Creten	Barbara Englund
Joel Aranson	James Boring	Shawn & Lance Castro	Nick Creten	Eric & Barbara Englund
Cary Armbuster	Edward "Fuzzy" Bossart	Gary Castro (2)	Mable Creten (4)	Gary Englund
Arrow	Luke Boston	Brandon Cernik	Bill Dalmolin	Budd Eversman
Jeff Aurich	Bob, Dianne & Megan Braun (2)	Brianna Cernik	Betty Ann Danna	Irving I. Facher
B & J Skate Center (3)	Jerry Breen	Kevin Cernik (2)	Joe Danna	Lois Facher
Bob Babcock	Noah Breen	Joe Champa	Don Perkins, Frank Torries	Marvin Facher
Janina Bacich	Douglas Breniser	Christian Chin	Darlene, Tricia, Dylan, Danika & Diane	Facher Grandchildren
Alan Bacon	Jackie Brezney	David J. Chrien	Kathi Deitz	Anthony Ferraro
Mike Bailey	Robert Brockway	John Chrien (2)	Chuck Derry	Rodney Fink
Carla Baker (2)	Keith Broda	Luther Berstein & Chuck Korp	Les & Joan Diener	Mike Finley
Kevin Baker	Clark Brown	Chris Cohen	Mr. & Mrs. Robert Dill	FDNYEngine10/Ladder10
Jim Ball	Keely & Kara Brown		Donald Dillon	Nancy Fleming
			Sue & Virgil Dooley	Michael Foley (2)
				Bob Fortmann

Frank & Bev	Jessica Kenny	Jim McMahon (2)	David Ramsey	Linda Taft
Chester Fried	Mitch Ker	Chuck McMillen	Ray W. Ramsey	Randy Talbot (2)
Fudge/Heyer	Marty Ketola	Paul McNeil	RC Sports Inc	Nelson Tavares (2)
Gary Fudge	Randy Kimmey	Jim Means (2)	Redwood D & F Club	Floyd A. Terry (3)
Bob Fuhst	Dennis King	Susan Means (4)	Ted Rendfrey (3)	Vickie Tharp
Paul Gamsby	Ellis King	Midwest Skate Co (4)	Todd Rendfrey (3)	The Gang
Dane Gazaway (2)	Forrest King	Robert Milligan (4)	Barney Reynolds	The Rink
Gayleen J. Geer	Kay King	Elaine Minch	Victor Riccobono	Mitch & Bev Thibodeaux
Gold Coast Roller Rink	Charles Kirchner (2)	Kylie Miner	Rinksider	(2)
Yumi & Greg Goody	George Kolibaba	Linda Miner	Bryce Robinson	Gypsy & Chris Tidwell
Bob & Shirley Gormley	Robert Kramer	Shawn Miner	Bently Robison	Tite Coat
Judy Graves	Grace R. Kwiet	Tanner Miner	Rollhaven Employees	Frank Torries
C.K. Gravitt	Vanessa LaCombe	Tim Mitchell	Rolling Wheels Inc	Willie Trent
Shirley Gravitt	Clarence R. LaCombe	Pamela Mitchell (3)	Tina Rose	Bo Trotter
Sonny Grenier	Landmark Bank (2)	James Moses	Arlene Rowland	Evelyn Trotter
Charlotte Groves (3)	Jacqueline Lankowski	Andrew Moul	RSA Heartland Section 4	James Turner
Terry Gunn	John Leflu	Robert Moul	(10)	Victor Urban
John Gustafson	Steve Legier	Marie Mullins	RSA Section 12 (10)	Gordon Budd Van Roekel
Diane Haffke	Arlene Lehman	John Muse	RSA Section 3	(10)
Jim Hafner	Derrick Lehr	Muskogee Skate Center	RSA Section 5 (2)	Nick Viscuso
James Hall	Scott Lehr	Jerry/Jim Nash	RSA Staff (2)	Gracie D. Wagner
Pat Hanaway	Marguerite Levenson	Cliff Nazzaro (2)	Alexandria Ruidiaz	Joseph Wagner
Maria Hansen	Debbie Lewis	Joe & Irene Nazzaro, Sr	Courtney Ruidiaz	Cort Wahlig
Dale Hanson	Julia Liette	Marsha L. Neary	Joni K. Salmon (2)	Charles Wahlig (2)
Rick Hansan	Judy Link (2)	Nellie, Doug, Dave Breen,	Mildred Saxton	Connie Wahlig (2)
Randall Harbuck	James Link Jr	Shawn Jones	David Schafer (2)	Tammy Wainwright
Gary P. Harrington	Kelly Little	Nellie & Jim	William G. Schneider	Harry & Lori Walker
Harris Miniature Golf	Susan Loos	Nancie J. Nemanich	Mr. & Mrs. Charles	Jack B. Walker
Joe Hassinger	C. W. Lowe	Mildred A. Neschke	Schroer	Ken Wall
Duffy Heyer	Mills Lynn (3)	Arthur Nodine	Florence Schuneman	Kim Wall
Mike Hill (2)	Magic Elm Skateland, Inc	Gloria Nord	George & Dorethy	Zita Wall
Jack S. Hobbs	Lou Magliato (2)	Frank Nugent	Schweigert	Marjorie Wall (2)
JoAnn Hodges	Stephanie & Lou	Tom Obert (2)	Chandler Sherman	DeWayne Wallis
Kurt Honabach	Magliato (2)	Larry Owens	Spencer Sherman	Doug Warren (2)
Mr. & Mrs. Ralph Horvath	Susan Maiolo	Roxanne & Larry Owens	Barbara Shores	Joyce & Sammy Watson
Joanne Housholder	Mark & Kim Majoros	Anne Pals	Jerry Shores (3)	Angie Weatherup (2)
Brian, Bradley & Chad	Orrin Mann	Ronald Parmley	Skate Place (2)	Pat Weaver
Hudson	Charles Manning (2)	Don Perkins	Skate World Inc	Carl K. Weiner
Harry & Dave Hunddawg	Lou & Sandy Marciani	Don & Susan Perkins	Skaterland of Decanter	Western Skate Supply
& Capn	Ron Martin	Susan Perkins	Skatetown of Enid	Dale & Wanda Whestal
Cole Hundley	Rose L. Martin	Perky's Foodservice	Jonathan Skutnick	Martin White
Mackenzie Hundley	Dick & Jules Mason	Tom Peterson	Dawn Smith	Norma Willison
Andrew Hunt	Chad Matejec	Dennis Pickard (2)	Gloria Smith	Ben & Barbara Winkler
Tim Hunter	Scott Matejec	George Pickard (2)	Joseph Smith	Jane Wojnarowsky
Ernie Ingles	Jodie Matejec (2)	Suzanne Pickard (2)	Mindi Smith	Elizabeth Woods
JBL Trinity Group (10)	Dr. Barry Matheson	Dolores N. Pillow	Southeastern Skate Supply	Frank Young
William Johnson	Joyce Maxwell	Robert Hall Plimpton	Employees	Ed Young (2)
Roy V. Jolley	William Maxwell	Edie Plimpton Reynolds	Chris St. Germain	Mike Zaidman
Shawn & Skye Jones	Robert McCann	Nadine Pokorny Meis (2)	Ernie St. Germain	Hazel Zimmer
Richard Jones (5)	Kiley McCreedy, Jenny	Gena C. Powers	Trace St. Germain	
Robert Jordan (2)	Decator, Dave Decator,	Joan K. Powers	Bill Steignor	
Cecelia Kelley	Linda Burnett, Mary	Pasquale M. Prozzillo	Brian D. Sterrett	
Gladys Kelly	Thrall	Michael Puckett	Al Strunk	
William Kelly	Bill & Dorothy McDonald	Teresa Purvis	Table 20	

Thank You for Your Support!



Memorials received in honor of Charlotte Groves have been donated to the museum from:

Annelle Anderson
 Bobby, Dianne and Megan Braun
 Carmen Busch
 Katherine Mandusic Finley
 The Scott Family
 Charles & Connie Wahlig
 Harry Walker
 Ted & Dianne Werner



Memorials received in honor of Virginia Darimont have been donated to the museum from:

Bert & Lynn Anselmi of the Rolladium
 Chris Baerg
 Michelle Baerg Muckey
 Ed & Barbara Bolton
 Betty Ann Danna
 Mr. & Mrs. Charles Derry
 Amelia M. Hakim
 Paul R. Hakim
 Nancy Gregory
 Roberta Jackson
 Cecelia Ann Kelly
 Paul Libke
 Caroline Mirelli
 Bud & Laurene Patton of the Rolladium
 Merely Popiel
 Marcella & Lewis Robbins
 Beverly Schien
 Skate World of Troy Staff, Troy, MI
 Skaters and Coaches at Skate World of Troy, Troy MI
 Laurie & Chuck Silver
 Ron & Kitty Thayer
 USA Roller Sports Eastern Region
 Charles & Connie Wahlig

Virginia Darimont's family have designated the memorial to be used for the purchase of a scanner and digital camera for the museum.

The following donors purchased a Memorial Plaque for Virginia "Ginny" Darimont in honor and memory of her 60 years as an active participant in the sport of Roller Skating as as Competitor, Coach and Judge.

The plaque was dedicated by the Owners, Coaches and Judges of Rolladium Skating Center, Waterford, Michigan: Bert & Lynn Anselmi, Terry Anselmi, Mary Margaret Campbell, Bob & Irene Coryell, Cheryl Griffith, Ed Justin, Lawuan Runde-Modrich, SueAnne Roth, Phyliss Tomlinson, Bud & Laurene Patton, John Beeding, Larry Chopp, Faith Dinnan, Christina Harding, Mark & Kim Majoros, Tom Obie and Wayne Shira.



MEMORIALS

The Patron Memorial Plaque was created to honor those individuals who have contributed to the growth of roller skating as a sport, recreation or business. A plaque may be purchased for a minimum contribution of \$250. Please fill out the information below if you are interested. All other donations are recognized in the newsletter.

In Memory of *In Honor of* *On Occasion of*

Name _____

Event _____

Please check one:

\$25 \$50 \$100 \$250

Other \$ _____

This contribution was made by:

Name _____

Address _____

City/State/Zip _____

Mail this form & payment (NMRS) to the museum.
 All donations are tax-deductible.

Membership

The National Museum of Roller Skating would like to thank these members who have either joined or renewed their membership with the museum since our last issue. Thank you for your support!

Patron (\$250)

Budd Van Roekel

Associate Patron (\$100)

Janina Bacich
L.R. Brown
Robert Labriola
Joe & Nancie Nemanich

Donor (\$50)

Ken Barton
Galaxy Skating Center
Dale & Patti Hanson
Cecelia Ann Kelley
Dianne McChesney
Setta Trophy, Inc.
DeWayne & Lois Wallis

Individual/Family (\$35)

Joel Aranson
Lou Brooks
Isidro Castro
Cynthia Gates
Bob and Shirley Gormley
Charlotte Roos Hoffrichter
Jacqueline & Robert Kane
John Kessler
Adele Kiefer
Grace Kwiet
Jacqueline Lankowski
Karen Lepish
Paul & Gwen McClincic
Nadine Pokorny Meis
Dana Meyer
Chuck Redman
Mr. and Mrs. Charles M. Schroer
George & Dorethy Schweigert

Phyllis Tomlinson
William Van Pelt
Marianne Vezerian
Paul & Lynne Weiss



Membership support is greatly appreciated!		Member Form
	Join Here!	
New	Renew	Name _____
<i>Check one:</i>		Address _____
Benefactor	\$500	City, State, Zip _____
Patron	\$250	<i>Thank you for joining!</i>
Associate Patron	\$100	Gift Membership Form (Makes a Great Gift!)
Donor	\$50	Name _____
Individual/Family	\$35	Address _____
Additional Contribution	\$ _____	City, State, Zip _____
Gift Membership	\$ _____	Benefits extend one year from join date. Please allow 3 weeks for processing. Membership includes a subscription to the member's newsletter, Historical Roller Skating Overview, 10% off museum store items, a membership card, and your choice of publications (please check one):
Total Enclosed	\$ _____	<i>The History of Roller Skating</i> ©1997 ISBN 0-9658192-0-5
Payment Method		<i>The Allure of the Rink</i> ©1999 ISBN 0-9658192-1-3
Check Payable to National Museum of Roller Skating		All donations are tax-deductible up to the amount permitted by law. Please clip/return to: National Museum of Roller Skating, Suite 2, Lincoln, Nebraska 68506
VISA MasterCard		
Card # _____	Exp. Date _____	
Signature _____		



A SKATING POEM

“Competition”

by Sally Labrie, figure skater from New Hampshire
originally printed in *Skate* magazine, Fall 1989

As I lace up my skates,
and shine up my plates,

I run through the steps,
and think of the beat.

Not worrying whether,
I’m the one to defeat.

I take the floor,
and I’m calm no more.

The judges have marked,
and I’ve done my best.

All I can do,
is hope for the rest.

My division is called,
and I am astounded.

As I step to my place,
the highest of all.

I wave to my friends,
and hope I don’t fall.

My trophy has come,
and so have the tears.

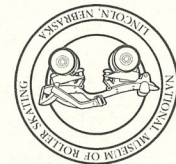
Now I have conquered,
the worst of my fears.

The moment has passed,
I wish it would last.

As I think where I placed,
a smile appears on my
face.

VISIT YOUR MUSEUM THIS SUMMER!

Change Service Requested



National Museum of Roller Skating (#82)
4730 South Street, Suite 2
Lincoln, Nebraska 68506

NON PROFIT ORG
U. S. POSTAGE
PAID
PERMIT #545
LINCOLN, NE