



Museum Newsletter

By James Vannurden
Director and Curator

National Museum of Roller Skating
4730 South Street, Lincoln, NE 68506
(402)483-7551 ex. 16
www.rollerskatingmuseum.com

Bi-Monthly
June 1, 2013

Who We Are

The National Museum of Roller Skating is a 501(c)3 non-profit organization located in Lincoln, Nebraska and the only dedicated roller skating museum in the world. We are committed to the preservation of the history of roller skating. With over 50 display cases, the museum educates the public on all aspects of roller skating, which dates back to the first patented skate from 1819.

Curator's Corner

Donation



The museum regularly reaches out to individuals and teams to acquire donations for our collection. A recent pitch paid off when the roller derby girls of the Norfolk (NE) Bruzzin' Bettys agreed to donate a game-used uniform. The Bettys are in their inaugural season competing in roller derby.

The state of Nebraska has four derby teams total. Lincoln, Omaha, and now Norfolk are represented in the museum. Platte Valley is the lone remaining team, but the museum hopes to soon see them represented in our collection as well.

Our goal is to showcase as many derby teams as we can. Anything with a team logo is acceptable. Smaller items such as stickers and patches allow the museum to display more team logos. Please contact the museum if you are interested in donating any roller derby memorabilia.

Flash back photo



The museum continues to succeed after thirty years. This is attributed to the hard work and dedication of all of the past and present board members and staff. Special thanks to the above board members, founders, and staff at the opening of the museum in 1982.

Pictured from left to right are: George Pickard, Burt Anselmi, Ed Young, Mike Brooslin, Marvin Facher, Bob Bollinger, Jim Turner, and Chester Fried.

Spring and Summer Visitation

With the outdoor temperatures increasing, more and more people are visiting the museum. Groups are even reserving tour dates, making June a busy month already. Even the traveling roller derby team below, the Pikes Peak Derby Dames, had time for a visit and photo.



Featured Skaters:
1916 Speed Skaters



Roller Skating Health Facts

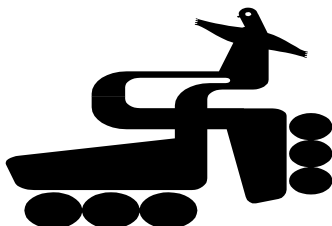
- Roller skating at a modest pace of 6 mph can burn up to 350 calories per hour.
- The American Heart Association named the three top sports for a healthy heart and they are: jogging, swimming, and roller skating.
- According to a study by the University of Massachusetts, roller skating causes 50% less impact on your joints than running.

Rink Photo:

Gold Coast Fort Lauderdale, FL



Renewing/New Members
Roller Skating Association



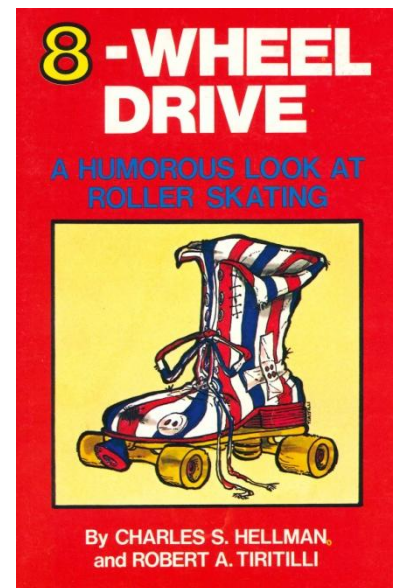
Featured Photo



The Arena Gardens in Detroit, MI supporting the war effort by collecting scrap metal. Rink manager Fred Martin demonstrates.

The sign above the barrel reads: "They need scrap...let's send it to them Via Bomber. Drop iron, brass, tinfoil, rubber in barrel...no rubber checks."

Library Feature



8-Wheel Drive: A Humorous Look at Roller Skating gives a different outlook on the sport of roller skating. It warns its readers over and over that while roller skating is the latest fad, good exercise, and fun that roller skating also comes with risks. Skaters should be careful and not try too much too fast. One quote states: "Those with flat feet, painful arches, and weak ankles should begin roller skating on whipped cream for effect or any other softer surfaces." This humor for the sport gives the book a different feel.

Skate of the Week Mt. Desert



This "Mt. Desert" improved roller skate was patented in 1882. The style of the truck on this skate was quite different from the other wooden plate skates of this period. The firm which manufactured the "Mt. Desert" is still unknown.

Wish List

1.) **Competition worn gear:** One of the most commented on parts of the museum collection deals with our event worn items. Whether dance costumes, speed uniforms, derby jerseys, hockey sticks, or specific skates, visitors like to see what people wear while competing in roller skating competitions.

The museum is most in need of items worn while competing for a national championship or a world title. If you have anything you feel meets the criteria and are interested in donating, please contact the museum at your earliest convenience.

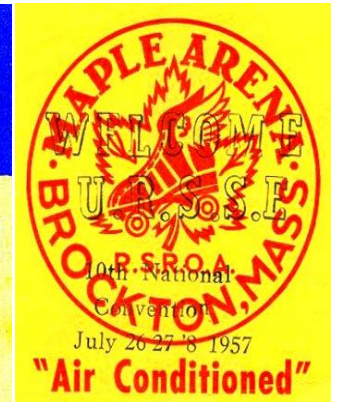
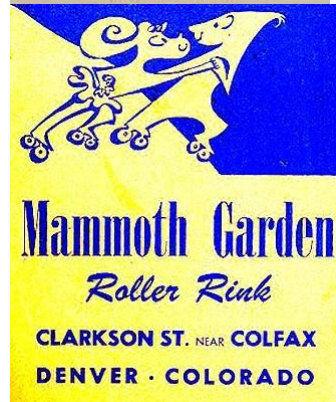
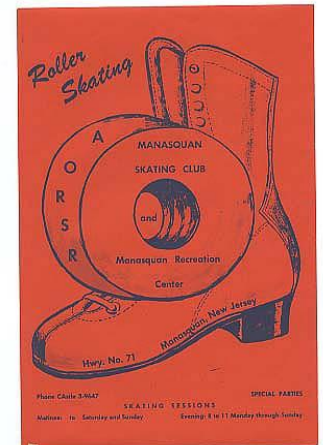
2.) **Original Artwork:** For those who visit the museum, we have a small collection of original artwork with a roller skating theme. We have original oil paintings from the Chicago Skate Company from the 1940s. There is a life-size sculpture of two girls carrying roller skates. We showcase an original lithograph from Cheret, the father of poster art. These items, along with a few others, make up our original art collection.

If anyone has any additional artwork with a roller skating theme, please contact the museum. We are looking to expand this part of our permanent collection.

3.) The museum is always in need of **odd and unusual skates**. Visitors are drawn to our different types of skates, variations to the norm, and how others failed to conform to the typical skate. On display now are animals skates as well as motorized skates. With anything you might consider an ODD skate, please contact the museum.

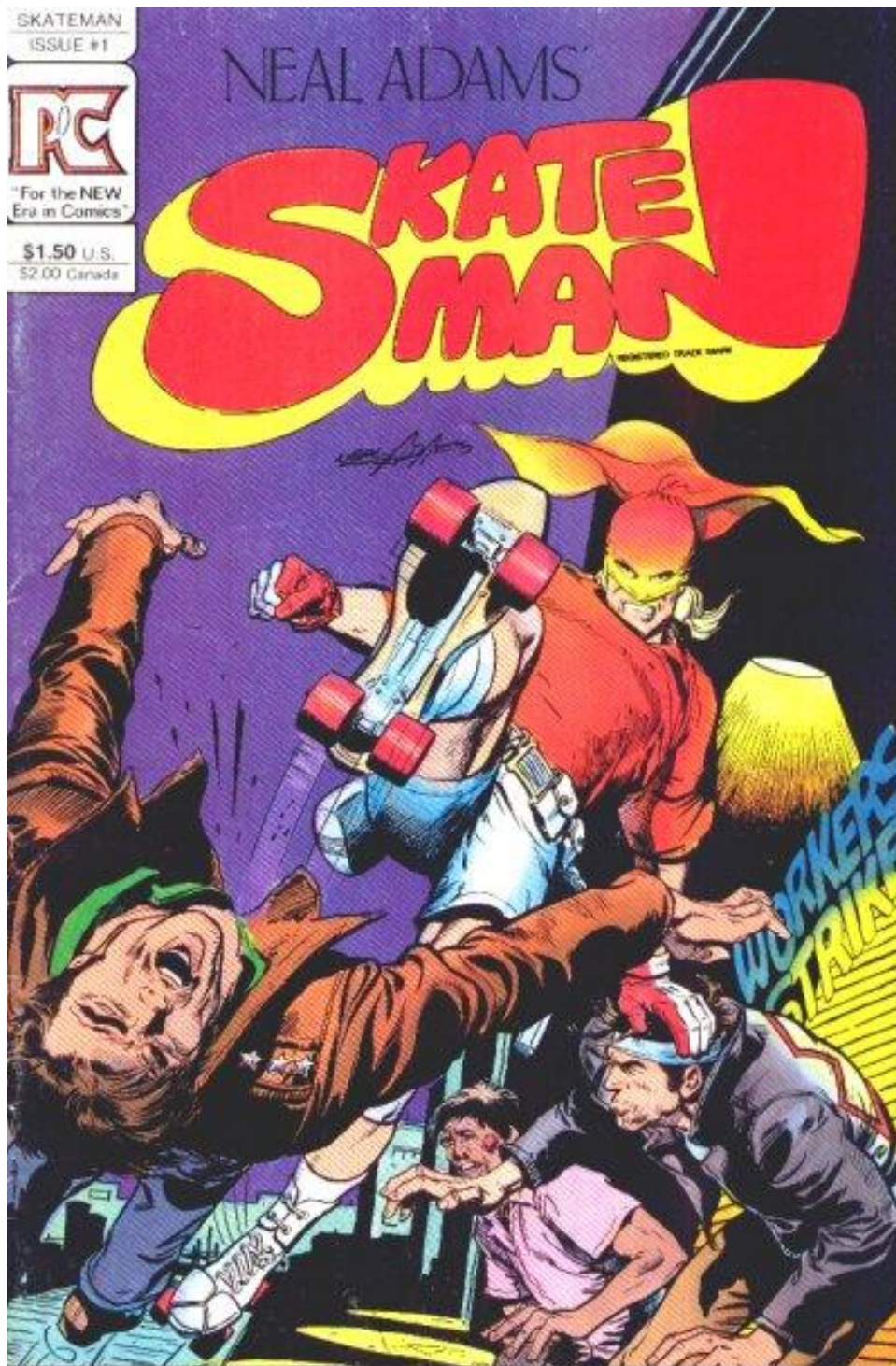
Rink Sticker Collection

The museum has an extensive collection of roller skating rink stickers. Many skating rinks used to produce stickers as both an advertisement and fun way to for skaters to interact with one another, comparing the different location in which they skated. These were even traded as collectibles both informally and formally, under the Universal Roller Skating Sticker Exchange founded in 1948. Each newsletter, we will feature four different rink stickers. Here are a few examples of the numerous stickers in the collection and on display at the National Museum of Roller Skating.



Thanks for supporting the museum!





Skateman, Issue #1. Superhero!