



Rolling Through Time

By James Vannurden

Director and Curator

Official Newsletter of:

National Museum of Roller Skating

4730 South Street, Lincoln, NE 68506

(402)483-7551 ex. 16

[@rollersk8museum](https://twitter.com/rollersk8museum)

Bi-Monthly
December 1, 2014

Who We Are

The National Museum of Roller Skating is a 501(c)3 non-profit organization located in Lincoln, Nebraska and the only dedicated roller skating museum in the world. We are committed to the preservation of the history of roller skating. With over 50 display cases, the museum educates the public on all aspects of roller skating, which dates back to the first patented skate from 1819.

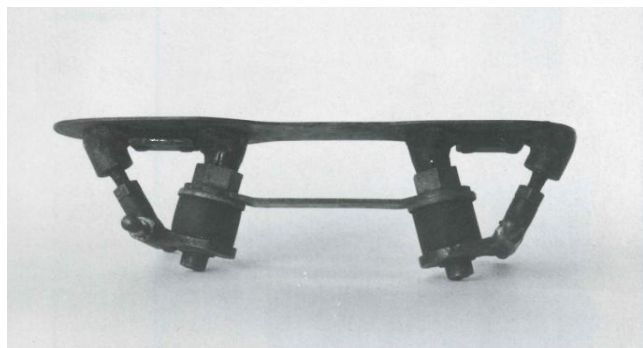
Curator's Corner

New Display Snyder Skate Company

With the winter months underway, the museum continues to rotate displays in its exhibition hall. This is a great way we can share other aspects of our collections with our visitors.

The next display featured in our newsletter revolves around the Snyder Skate Company.

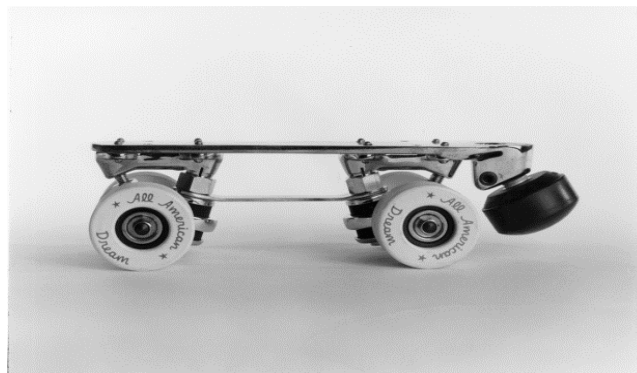
The Snyder Skate Company began in 1939 when Charles Snyder made his first pair of skates so his daughter could compete more effectively in competitions. It worked. Shirley Snyder won several ladies figure skating titles in the early 1940s.



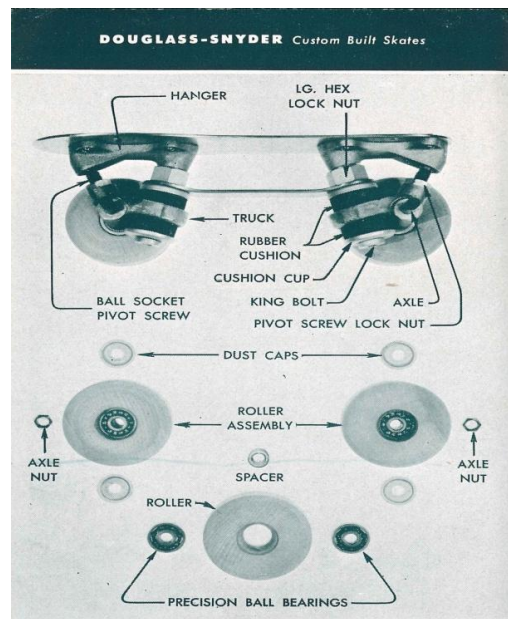
The first Snyder skate.

To achieve a greater degree of flexibility, Snyder introduced a double-action skate in the late 1940s. Manufactured with a spring steel plate, this new concept enabled skaters to perform a more crisp routine, as well as finer figures during their competitions. Soon all other manufacturers adopted the double action technology and this type of skate became the new norm.

Snyder stated in numerous advertisements that their skates were "designed to give the utmost satisfaction in dance, figure, and free-style skating."



This Snyder 'Super Deluxe' skate above was equipped with polyurethane All American Dream wheels and produced during the 1980s.



As stated in their pamphlet above: *Only the finest materials are used in Douglass-Snyder skates and all parts are accurately machined to close tolerances. The plates and cross bars are chrome plated and both are made of hardened and tempered spring steel. Aluminum alloy castings are used for high tensile strength and lightness. Axles are finest steel, hardened and tempered for long service. Rubber cushions are scientifically designed for resilience and long life. King pins are made of high tensile strength alloy steel, heat treated to eliminate bending and breaking.*

New and Renewing Members

Richard Sholes
Carlos Ferreira
Jim Turner

Thanksgiving Holiday Special Events

To celebrate the Thanksgiving holiday, many rinks throughout the years have taken the opportunity to host special skating sessions commemorating the season.



Smoky Mountain Sk8way of Waynesville, North Carolina appeals to the sentimentality of its patrons here in their advertisement, hoping they share a family experience at the rink that can turn into an every year occurrence.



Skateland of Indianapolis appeals here to an adult crowd through late hours and R&B and hip hop music.

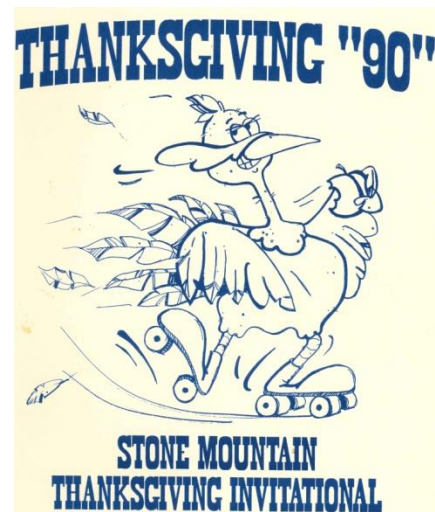


The Kansas City rink of Winnwood Skate Center also promotes a late night skate ending at 1AM, the day before Thanksgiving.

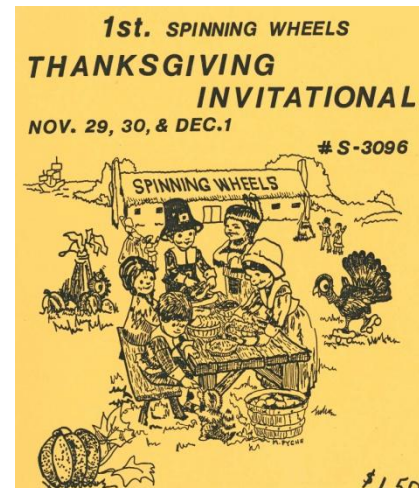
Thanksgiving Invitationals



Skateport from Springfield, MO



The All American Skating Center from Stone Mountain, GA hosted not only clubs from surrounding states but branched out to Kansas, Kentucky, and Maryland teams.

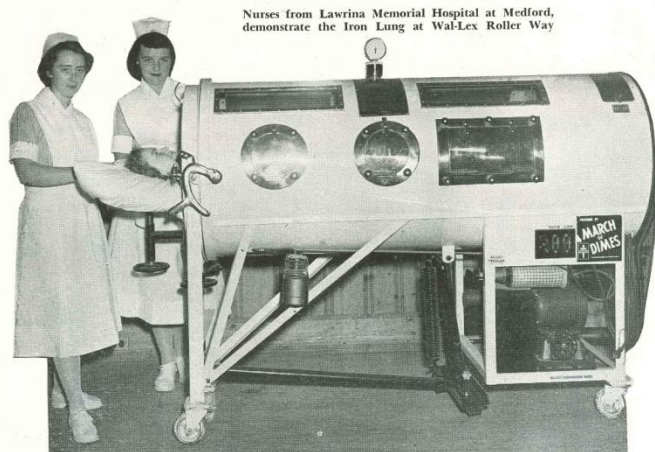


Spinning Wheels of New Hampshire hosted their artistic competition over a three day period during the Thanksgiving holiday.

Breath of Life Club

Florence Cagno wrote of a newly formed skating organization called Breath of Life in the Nov 1951 issue of *Skating News*.

Founded by Jim Price and Johnny Rando of Wal-Lex Rollerway of Waltham, Massachusetts, Breath of Life began as a polio fundraising campaign. Their goal was to raise enough money to purchase iron lungs used for the fight against polio and other respiratory diseases. The cost of each unit totaled \$1,650.



Nurses from Lawrina Memorial Hospital at Medford, demonstrate the Iron Lung at Wal-Lex Roller Way

Nurses demonstrate the iron lung at the rink

Cagno writes, "It is remarkable when roller skaters will organize by the thousands and give unselfishly of their time and effort for this charitable program with no reward other than the knowledge that individually and collectively they are contributing to a great cause."

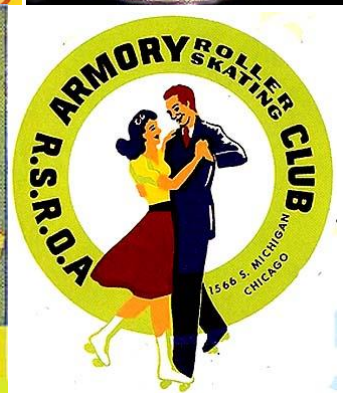
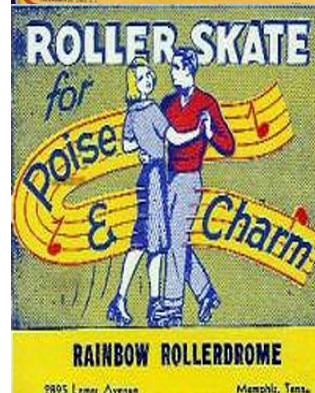
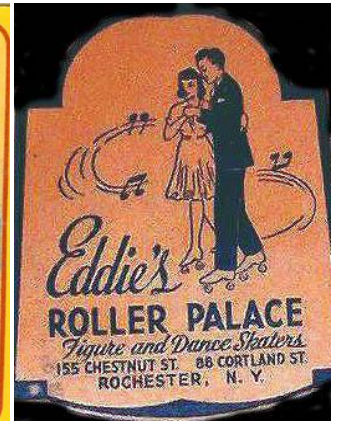
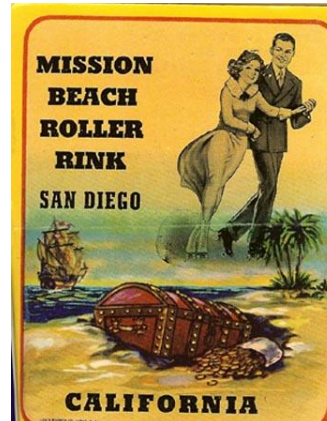


Fourth of July celebration parade in Waltham

Other rinks in the area took note and started their own campaigns as Breath of Life affiliates. Hi-Hat Rollaway of Lowell, MA contributed an iron lung after a six month effort. Ed LaVenture, operator of Whalom Roller Skating Rink in Fitchburg, MA, topped \$2,000 in donations for another lung. Charlie Santoro of Roll-Land in Norwood also participated in securing funds for an additional lung.

Rink Sticker Collection

The museum has an extensive collection of roller skating rink stickers. Many skating rinks used to produce stickers as both an advertisement and fun way to for skaters to interact with one another, comparing the different location in which they skated. These were even traded as collectibles both informally and formally, under the Universal Roller Skating Sticker Exchange founded in 1948. Each newsletter, we will feature different rink stickers. Here are a few examples of the numerous stickers in the collection and on display at the National Museum of Roller Skating.



Thanks for supporting the museum!

