



Rolling Through Time

By James Vannurden
Director and Curator

Official Newsletter of the:
National Museum of Roller Skating
4730 South Street, Lincoln, NE 68506
(402)483-7551 ex. 16

Bi-Monthly
August 1, 2013

Who We Are

The National Museum of Roller Skating is a 501(c)3 non-profit organization located in Lincoln, Nebraska and the only dedicated roller skating museum in the world. We are committed to the preservation of the history of roller skating. With over 50 display cases, the museum educates the public on all aspects of roller skating, which dates back to the first patented skate from 1819.

With the introduction of recorded sound, phonographs and gramophones highlighted small parlor rinks before the introduction of the organ. The museum now has this link in rink music history. We can show the flow from live music, to small recorded music, to organs, to digital music. Our new plaque explains this transition.

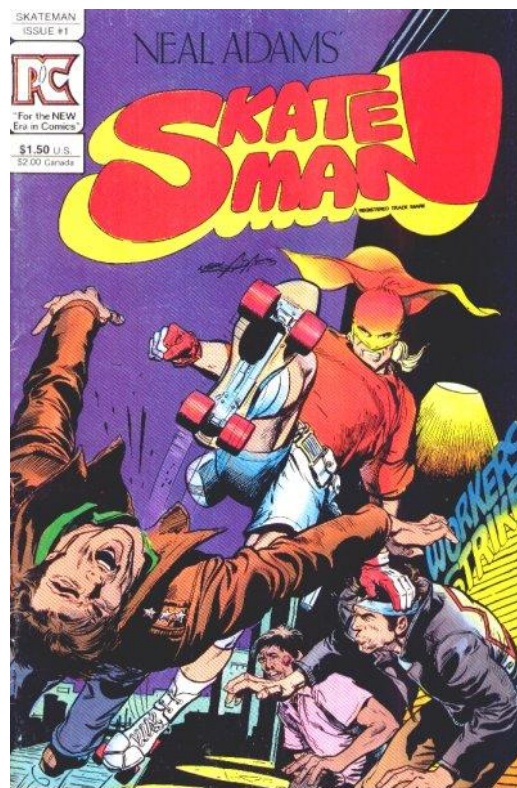
Curator's Corner

Donations Gramophone Plaque



Our recently acquired 1906 gramophone now has proper description. This new plaque explains the significance of this piece to the musical history in roller rinks. Early rink music consisted of live performances, either by brass bands or small orchestras. This was the main form of musical entertainment while skating.

Comic book donation



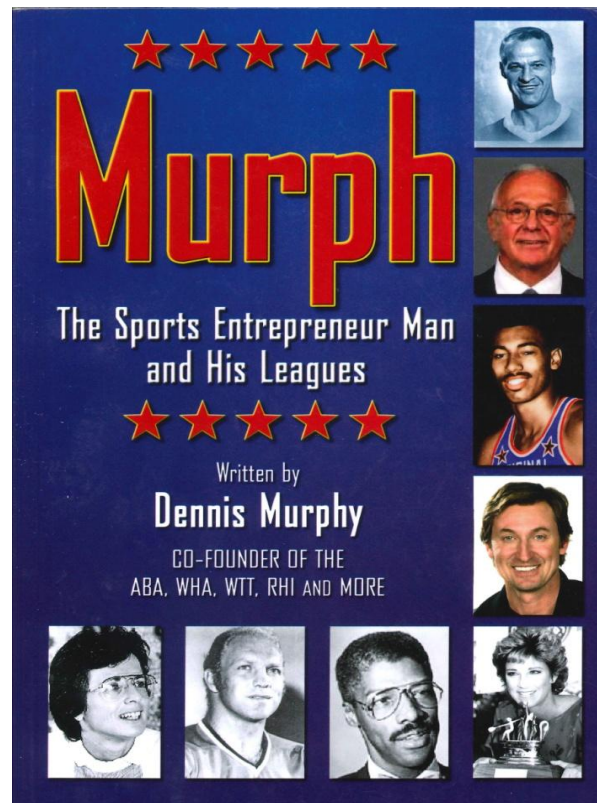
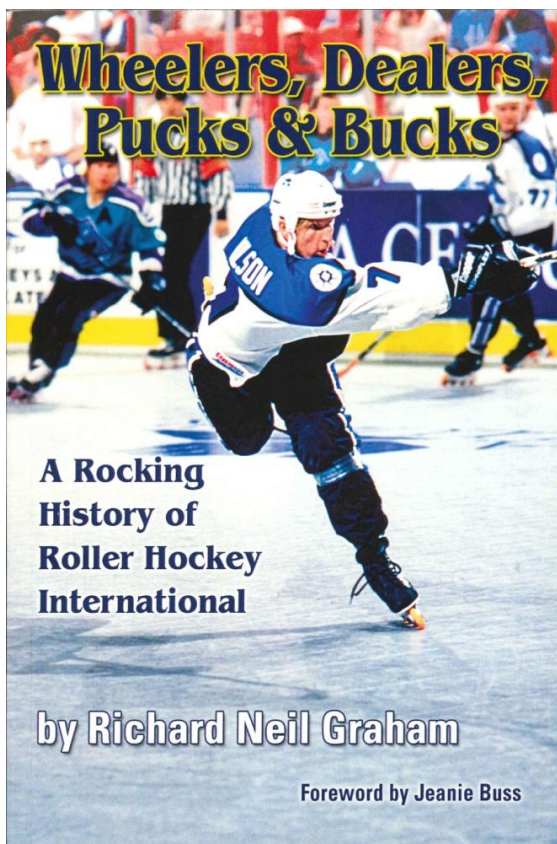
Not too long ago, this newsletter featured the above comic book. After that, we took to Facebook in an effort to secure a donation of this issue of *Skateman*. Within days, the museum received notification from Linda Hall that she and her husband would donate a copy of this comic book.

Skateman tells the story of a young man with a martial arts background who served in Vietnam but had built up anger. Billy's outlet became roller derby. After causing an accident which took the life of a derby player, he left the sport and state for a new life. With the death of his love at the hands of a motorcycle gang, Billy channeled his pain into fighting crime.

More Donations: Two Books on RHI
Both donated by George Pickard

Murph

Wheeler, Dealers, Pucks, & Bucks



Richard Neil Graham discusses the rise and fall of Roller Hockey International in his book *Wheeler, Dealers, Pucks, & Bucks*. Dennis Murphy created RHI after witnessing children playing roller hockey in the street. His professional league ran from 1993-1999, juxtaposed to the inline skating craze during the 1990s.

As said earlier, the creator of Roller Hockey International was Dennis Murphy. In this book, Murphy reminisces about the many leagues he fathered and administered, including the RHI.

Most of the reading deals with those most involved with the league. There are stories from team owners, league founders, players and officials, administrators, and even some fans of the game.

On page 238 Murphy stated: "During my long career, RHI was the easiest league to put together and the most difficult to keep together."

To show the new league to the masses, RHI founders decided to put on a tour. Games were played in three cities: Los Angeles, Phoenix, and Vancouver. The three games were well received, all having been shown on television. This greatly expanded exposure to the new league and began a wonderful run of professional roller hockey in the United States.

1993 RHI Playoff Results

VANCOUVER 7	CALGARY 5	
CALGARY 8		
ST. LOUIS 5	OAKLAND 8	OAKLAND 7, 4
OAKLAND 7		
ANAHEIM 15	ANAHEIM 13	ANAHEIM
CONNECTICUT 8		
LOS ANGELES 6	LOS ANGELES 4	ANAHEIM 10, 9
TORONTO 5		



Skate of the Week Scorpion Skates



Scorpion™ Skates were launched internationally in 2005 as a multi terrain model designed to provide recreational skaters with all the fun, look and performance of an off-road vehicle. Able to be used on almost every surface from rough and demanding mountain tracks, to the more easy going grass hills, nature trails and boardwalks, these skates provide a way to cross most terrains.

The New Zealand based company, with distribution in California, graciously donated this set of used Scorpion skates for the museum's collection this week.

Wish List

1.) **Competition worn gear:** One of the most commented on parts of the museum collection deals with our event worn items. Whether dance costumes, speed uniforms, derby jerseys, hockey sticks, or specific skates, visitors like to see what people wear while competing in roller skating competitions.

The museum is most in need of items worn while competing for a national championship or a world title. If you have anything you feel meets the criteria and are interested in donating, please contact the museum at your earliest convenience.

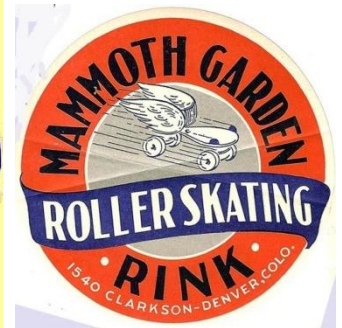
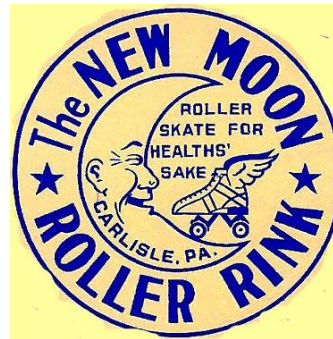
2.) **Original Artwork:** For those who visit the museum, we have a small collection of original artwork with a roller skating theme. We have original oil paintings from the Chicago Skate Company from the 1940s. There is a life-size sculpture of two girls carrying roller skates. We showcase an original lithograph from Cheret, the father of poster art. These items, along with a few others, make up our original art collection.

If anyone has any additional artwork with a roller skating theme, please contact the museum. We are looking to expand this part of our permanent collection.

3.) The museum is always in need of **odd and unusual skates**. Visitors are drawn to our different types of skates, variations to the norm, and how others failed to conform to the typical skate. On display now are animals skates as well as motorized skates. With anything you might consider an ODD skate, please contact the museum.

Rink Sticker Collection

The museum has an extensive collection of roller skating rink stickers. Many skating rinks used to produce stickers as both an advertisement and fun way to for skaters to interact with one another, comparing the different location in which they skated. These were even traded as collectibles both informally and formally, under the Universal Roller Skating Sticker Exchange founded in 1948. Each newsletter, we will feature four different rink stickers. Here are a few examples of the numerous stickers in the collection and on display at the National Museum of Roller Skating.



Thanks for supporting the museum!

