



Museum Newsletter

By James Vannurden
Director and Curator

National Museum of Roller Skating
4730 South Street, Lincoln, NE 68506
(402)483-7551 ex. 16
www.rollerskatingmuseum.com

Bi-Monthly
January 16, 2013

Who We Are

The National Museum of Roller Skating is a 501(c)3 non-profit organization located in Lincoln, Nebraska and the only dedicated roller skating museum in the world. We are committed to the preservation of the history of roller skating. With over 50 display cases, the museum educates the public on all aspects of roller skating, which dates back to the first patented skate from 1819.

Curator's Corner

Display Cabinets Intalld!!



After months of preparation between the grant writing process, formal presentation, acceptance, designs, and excitement, the museum now houses seven new displays cabinets. Located in the entrance of the building, visitors are now greeted by sites of the museum as opposed to office space. This opening gallery immediately immerses our guests with the great treasures housed in the museum.



Six of the cabinets are located in the foyer of the building. These are pictured in the two previous photographs. The four attached cabinets are directly across the room from the two attached cabinets.

Display ideas are already set and under construction. These include: Evolution of the Roller Skating, Roller Skating Rinks of Nebraska, and the four disciplines of competitive skating. Those of course are artistic, derby, hockey, and speed skating.

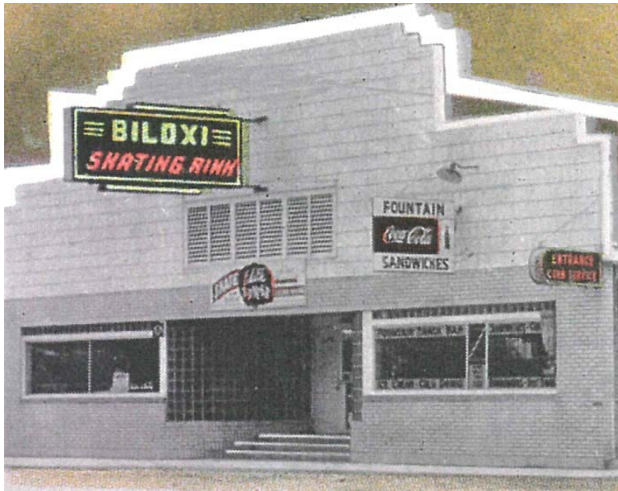
The seventh display cabinet is located in the entry vestibule directly next to the front door. This small area between the front door and the building door has always been a small buffer zone from the outdoors. The area has always had one large display case to the right of the door. Now we installed a matching case to the left of the door. This new cabinets is pictured below.



The idea for this cabinet is still fluid. Possibilities include national championship locations, nationwide rinks, and Lincoln hosting the most national competitions.

Rink Photo:

Biloxi Skating Rink: Biloxi, Mississippi



Located on 125 West Central Beach, the Biloxi Skating Rink was the only roller skating rink in Biloxi in 1955. It featured Edith Hunter at the Hammond Electric Organ.

Roller Skating Firsts

- First historic mention of roller skating came around 1700 with a Dutchman attaching wooden spools to his ice skates.
- First individual name mentioned with roller skating came in 1760 with Belgian John Joseph Merlin creating his own skates.

Skate of the Week

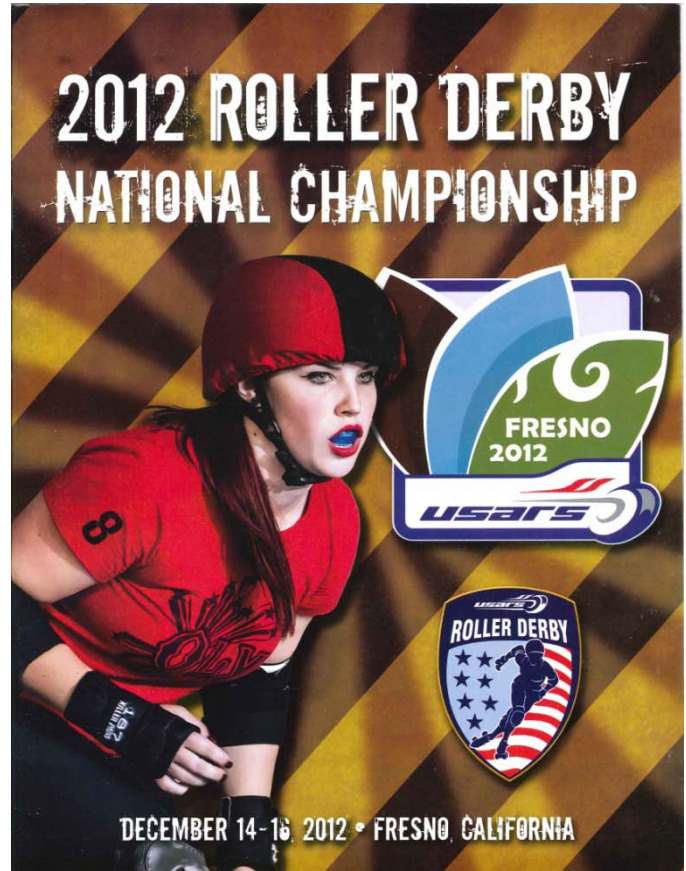
Spalding Inline Skate



This parlor skate has a similar construction blueprint to our previous discussed Gregg skate. Patented in March of 1877, this Louis H. Gano metal skate also has two wheels in the middle between the wheels on either end. The wheels located on the ends were placed on curved posts so they could turn freely around. This way the wheels can follow with the motions of the foot. The wheels in the center, being larger, are connected to a bracket which allows them the freedom to rock side to side slightly, giving the skater the extra assistance in turning corners. These skates originally had straps to attach to the skater's shoe. Donated by the Van Roekel family, this skate is on permanent display and helps us show the evolution of the roller skate.

Library Feature

2012 Roller Derby Championship Program



USA Roller Sports hosted its inaugural roller derby national championship tournament in December. Teams registered with USARS are allowed to compete in qualifying tournaments to become eligible for this national championship competition. Above is a picture of the first program from this national championship contest, hosted by NOtown Roller Derby of Fresno, California. Teams in the completion included

:

- Birmingham Roller Derby
- Deep South Derby
- Oly Rollers
- Port City Roller Girls
- Resurrection Roller Girls
- San Diego Roller Derby
- Tulsa Derby League
- Underground Derby

Three junior roller derby teams also competed. These included: Bakersfield, Motown Misfits, and Vtown Derby Delinquents.

The Oly Rollers of Olympia, Washington defeated the girls from San Diego Roller Derby to become the first USARS Roller Derby National Champions They received the official trophy, the Seltzer Cup.

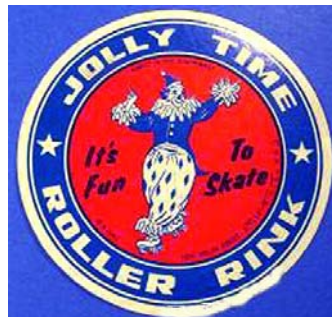
Official rosters, photographs, and schedules are found in the program.

For those wishing to renew their memberships, we included the following form. Thanks in advance!

MEMBERSHIP FORM		
Name:	_____	
Address:	_____	
City/State/Zip:	_____	
Membership Level	1 year	2 years
Benefactor	___ \$500	___ \$950
Patron	___ \$250	___ \$475
Assoc Patron	___ \$100	___ \$185
Donor	___ \$50	___ \$90
Individual/Family	___ \$35	___ \$65
Additional Contribution	\$ _____	
Total Enclosed \$	_____	
Method of Payment		
___ Check to National Museum of Roller Skating		
___ Visa	___ MasterCard	
Credit Card		
Number	_____	
Exp.	_____	
Signature	_____	
Mail to: National Museum of Roller Skating, 4730 South Street, Lincoln, NE 68506 Fax to: 402-483-1465		

Rink Sticker Collection

The museum has an extensive collection of roller skating rink stickers. Many skating rinks used to produce stickers as both an advertisement and fun way to for skaters to interact with one another, comparing the different location in which they skated. These were even traded as collectibles both informally and formally, under the Universal Roller Skating Sticker Exchange founded in 1948. Each newsletter, we will feature four different rink stickers. Here are a few examples of the numerous stickers in the collection and on display at the National Museum of Roller Skating.



Wish List

1.) **Rink Files:** The museum seeks to expand its roller rink files. In the archives, the museum houses files upon files of individual roller rinks from across the country. These files are used for research purposes.

The more rinks we have on file, the greater chance we have to help those searching for information. We are looking for photos, programs, ticket stubs, newspaper articles, and any other primary information about roller rinks.

2.) **Regional programs:** We need modern issues of all regional programs. For example, we need Northeast programs from '93-'00 and '04-present, Southeast '88-'97 and '05-present, and Eastern '86-'97 and '04-present..

The museum's goal is to have two copies of each issue for its permanent archives. With regionals now over, **please send copies of your regional programs** to the museum. Thanks in advance.

3.) The museum needs items from **jam skating**. DVDs, skates, programs, t-shirts, magazines, and anything associated with the sport are needed for the museum. Please contact us to see what you can donate.

Thanks for supporting the museum!



COME WITH ME FORA ROLLER SKATE

*The
ROLLER SKATING
SONG CRAZE.*

*By
CHARLES E.
WELLINGER*



FRED HAMILL



COPY DEPOSITED NO. 18446

Roller Skating Sheet Music Cover