



Museum Newsletter

By James Vannurden
Director and Curator

National Museum of Roller Skating
4730 South Street, Lincoln, NE 68506
(402)483-7551 ex. 16
www.rollerskatingmuseum.com

Bi-Monthly
May 16, 2012

Who We Are

The National Museum of Roller Skating is a 501(c)3 non-profit organization located in Lincoln, Nebraska and the only dedicated roller skating museum in the world. We are committed to the preservation of the history of roller skating. With over 40 display cases, the museum educates the public on all aspects of roller skating, which dates back to the first patented skate from 1819.

Curator's Corner

RSA National Convention

On Sunday morning, April 29th I flew out to Las Vegas to represent the museum at the 2012 Roller Skating Association annual convention. My duties were three fold: first, I attended the annual museum board meeting; second, I manned the museum booth at the convention; and third, I assisted in the annual museum raffle held during the President's Dinner.

On Sunday afternoon the museum board met for their annual meeting. With eleven of the board members present, we discussed the current state of the museum. The museum raffle, new outdoor sign, and museum member numbers dominated the conversation. The pleasant meeting ended with new members added to the board. It was great getting everyone in the same room to discuss the museum.

After setting up the museum booth on Monday, the convention began on Tuesday. For two afternoons, those in attendance visited booths, sharing ideas and networking. The museum added three new members and sold many museum-issue books, including its two newest *Titans and Heroes* and *Skater's History*. Also the museum was able to procure a few donations for the future, including cowboy boot skates. Once these donations arrive, we will share them with you in this newsletter.

Finally, on Wednesday the RSA held its President's Dinner. While tickets were sold throughout the week, at the dinner was where most purchased tickets. In total the museum sold 322 tickets with the grand prize winner being Verna Quaranto.

Congratulations to all 25 winners. Special thanks to those who donated back their winnings. Thanks again to all who supported our raffle by purchasing tickets.

Skater Profile: Frank Bryant Minnesota/Northwestern champion

*This information can be found in the book from the museum store entitled **Skaters History on Ice and Roller Skating**. For more information like this, consider purchasing the book. Thanks.*

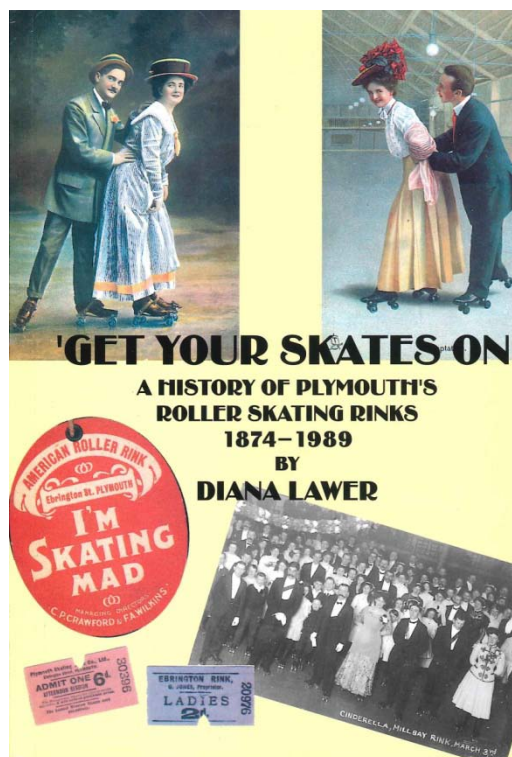


Frank Bryant began his skating career at the age of 18 in Duluth, Minnesota. In 1909 Bryant won his first competition, the Head of the Lakes Championship; here he defeated Ed Moe in the one, two, and three mile courses. His continued success lasted for 47 straight races, when he suffered his first defeat at the hands of Joe Munch of Milwaukee.

In 1913 Bryant got his revenge. During the Northwestern Championships, Bryant defeated Munch four out of five races to take the title. This included a record time for a one mile race, 2:49, at the Riverview Skating Palace in Milwaukee.

All his regional victories did not lead to a successful nation career for one reason: injury. In the summer of 1916, Bryant suffered a bicycle injury and injured his knee enough to forcibly give up the sport of roller skating. For his skating career, Bryant claimed a record of 211 victories to 19 losses.

Library Feature:
Get Your Skates On
 By Diana Lawer



While most of the books in the museum's collection were published in the United States, the museum always seeks to add foreign publishers, such as *Get Your Skates On*. Authored in the United Kingdom, this selection tells of the long history of the town of Plymouth and how intertwined it was to the sport of roller skating.

Chapter eleven discusses how the local rinks were involved with the military. One such instance remembers a party held during the weaning hours of the First World War. "At Millbay Rink yesterday, by permission of the Major-in-Command, fifty men of the South African Heavy Artillery were entertained. After skating and a tea three hearty cheers were given to Mr. Brock. One of the men said this was the first time they had been entertained, and they should always remember it." A second instance describes bombing suffered from the Axis powers during World War II, which severely damaged the Millbay Rinkeries.

New Museum Members

Andy Starr
 Donna Rhodes
 Roller derby player Ivanna S. Pankin

Thanks to the following renewing members

Budd & Maurice Van Roekel
 Kellie Reynolds

Skate of the Week:
 Vaudeville



A gift of Edward O'Neill, this skate was used during the Vaudeville Era of American History. During these variety shows, roller skating acts found much success with customers. These skates date to the 1920s.

The Chicago Skate Company plates attach to a man's black, leather shoe. Bolted underneath the shoe, the plate rests above the trucks and cushions as normal.

While it is unknown the specific purpose for these skates, surely this was a way to portray roller skating in a more outlandish fashion. Many acts during the Vaudeville era went over the top in one way or another; these skates seem to prove this included roller skating.

Rink Profile

Lincoln Rink: Lincoln, NE



The first large roller skating rink in Lincoln opened in 1936 at 1918 O Street. Owned and operated by Tom and Mary Boydston, Lincoln Rink had a maple "floating" floor. Tom created a pleasant atmosphere through discipline and proper attire. In the early 1940s, a majority of skaters were service members from the local Air Base. In 1949, the rink moved to its second location on the State Fairgrounds and remained there until 1957. In 1957, Lincoln Rink moved to 1316, 47th Street and remained open for two years before closing in 1959.

For those wishing to renew their memberships, we included the following form. Thanks in advance!

MEMBERSHIP FORM

Name: _____

Address: _____

City/State/Zip: _____

Membership Level 1 year 2 years

Benefactor ___ \$500 ___ \$950

Patron ___ \$250 ___ \$475

Assoc Patron ___ \$100 ___ \$185

Donor ___ \$50 ___ \$90

Individual/Family ___ \$35 ___ \$65

Additional Contribution \$ _____

Total Enclosed \$ _____

Method of Payment

Check to National Museum of Roller Skating

Visa MasterCard

Credit Card

Number _____

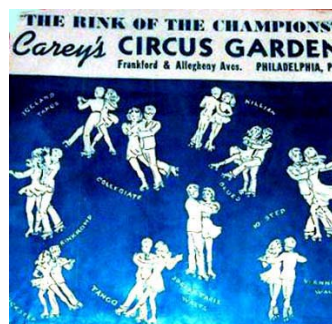
Exp. _____

Signature _____

Mail to: National Museum of Roller Skating,
 4730 South Street, Lincoln, NE 68506
 Fax to: 402-483-1465

Rink Sticker Collection

The museum has an extensive collection of roller skating rink stickers. Many skating rinks used to produce stickers as both an advertisement and fun way to for skaters to interact with one another, comparing the different location in which they skated. These were even traded as collectibles both informally and formally, under the Universal Roller Skating Sticker Exchange founded in 1948. Each newsletter, we will feature four different rink stickers. Here are a few examples of the numerous stickers in the collection and on display at the National Museum of Roller Skating.



Wish List

1.) **Rink Files:** The museum seeks to expand its roller rink files. In the archives, the museum houses files upon files of individual roller rinks from across the country. These files are used for research purposes. The more rinks we have on file, the greater chance we have to help those searching for information. We are looking for photos, programs, ticket stubs, newspaper articles, and any other primary information about roller rinks.

2.) **Regional programs:** We need modern issues of all regional programs. For example, we need Great Lakes regionals from 2002 through the present but also 1992-97. We need Southern regionals from the past five years. The museum's goal is to have two copies of each issue for its permanent archives.

3.) The museum has only a few copies of **Jam Skating Magazine** and would like to complete its collection. The dates on magazines we have are from June of 2004 and March 2005. Please contact the museum if you would like to donate any issues of the magazine.

Thanks in advance for your considerations.

Thanks for supporting the museum!





RIVERSIDE STADIUM, WASHINGTON--Host to the '49 American Championships

Riverside Stadium, big Washington RSROA member rink which will be host to the 1949 American Championships, operated as an ice arena before being converted to a roller skating rink in 1942. Formerly the home of the Washington Figure Skating Club (Ice), Washington Eagles Hockey Team of the Eastern Amateur Hockey League and Washington home of the Shipstad and Johnson Ice Follies. Roller skating's meteoric rise in sports finally induced Mr. S. G. Leoffler, Sr., into leasing the building to his son, S. G. Leoffler, Jr. (who has since been joined by his brother, Layne E. Leoffler, and they now operate together as a partnership) and changing over to roller skating, which was done in the fall of '42.

The building dimensions are 150 ft. by 300 ft., having a main skating surface of 200 ft. by 100 ft., a figure skating floor 50 ft. by 80

ft., plus a beginner's floor 50 ft. by 50 ft. Music is furnished by Hammond Electric Organ featuring Miss Penny Martin, who has played at Riverside since its opening.

The Riverside Roller Club, which has averaged better than 1,500 members per year since its inception, is a model of mass production of skaters; having a complete Dance Club Class system that gives them the opportunity to learn over 50 dances, and also a complete Figure and Free Style Class.

The Club has staged shows for the past three years for the benefit of The Children's Hospital, Washington, D.C., Infantile Paralysis Fund and has donated many thousands of dollars to this cause.

Louis Bargmann and Phyllis Rowley are Professionals in charge.

