



Rolling Through Time

By James Vannurden
Director and Curator

Official Newsletter of:

National Museum of Roller Skating

4730 South Street, Lincoln, NE 68506

(402)483-7551 ex. 16

Bi-Monthly
March 1, 2014

Who We Are

The National Museum of Roller Skating is a 501(c)3 non-profit organization located in Lincoln, Nebraska and the only dedicated roller skating museum in the world. We are committed to the preservation of the history of roller skating. With over 50 display cases, the museum educates the public on all aspects of roller skating, which dates back to the first patented skate from 1819.



Curator's Corner

Skate donation



After reaching out to the Cardiff Skate Company of California, the company honored our request and sent two pair of its skates.

Cardiff describes their skates as, "Our three-wheeled, bootless, easy-on, easy-off, one-size-fits-all technology makes skating easier and more enjoyable than ever before. Our unique wheel configuration and braking system is more stable and convenient than any other skate on the market, making them perfect for transportation or recreation anywhere, for everyone!"

Its features include:

- Patented, spring-loaded automatic size adjustment system (ASA)
- Engineered, with maximum stability Tri-Skate Technology.
- 100mm/85A side wheels, 90mm/85A front and brake wheels.
- ABEC 5 chrome bearings and aluminum spacers
- Anodized aluminum rails and brakes.
- Cushioned front strap made of EVA Foam

The Cardiff Skate Story

2004: Brian Green, combining skating with the success of the scooter, created an experience that could be enjoyed by skaters of all abilities.

2008: After a few years of testing wheel configurations, tri-skate wheel design taken to Munich to perfect design, creating a multiple sizing system.

2009: Partnered with California design firm to streamline design, creating binding system for secure shoes.

2010: First prototypes constructed by Asian manufacturer, including two years of testing.



Twitter

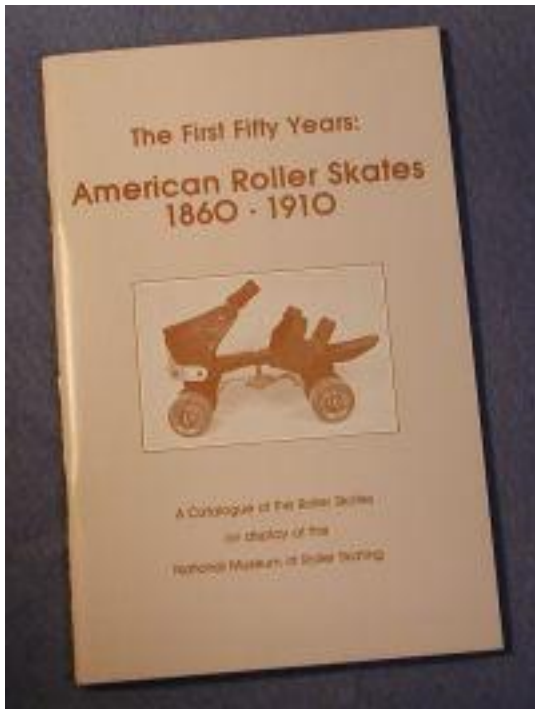


The museum has now joined the Twitter universe. This social media outlet will help us connect with potential visitors and regular supports. We will post news and most of all photographs. Please follow the museum at:

@rollersk8museum

Bookstore Feature

*The First Fifty Years:
American Roller Skates
1860-1910*

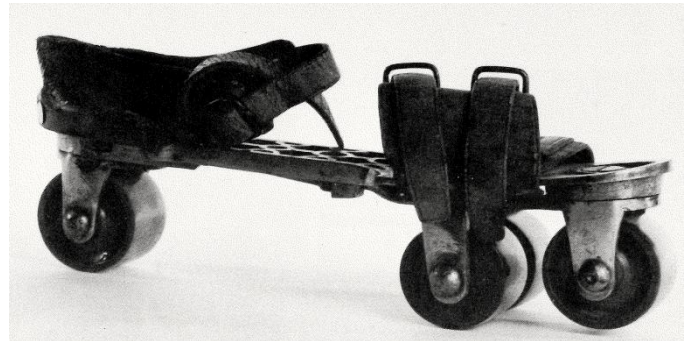


As demonstrated above with our latest donation, the National Museum of Roller Skating prides itself in gaining as many models of skates as possible to tell the story of roller skating.

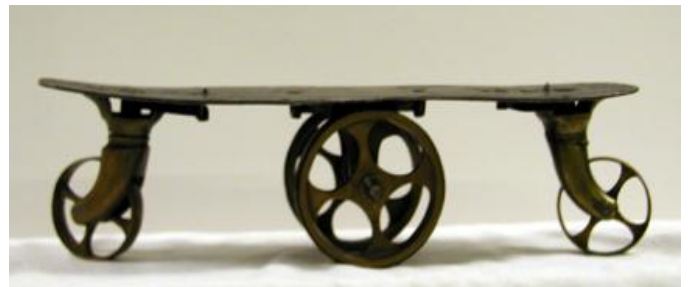
The First Fifty Years traces the development and technological improvements of the American roller skate from its origins in the 1860s to the point where the design of the modern roller skate was essentially complete.



This original Plimpton roller skate from 1863 solved the problem early skates had with control and rounding corners with success. Only inline skates were in existence at this time. Plimpton is credited with producing this first four-wheel, quad roller skate. Skates now had greater control over their movements, could turn corners with ease, and had greater balance with an expanded wheel base.



This 1869 model skate from Gibson provides an example of a roller skate-ice skate combination. Just remove the three rollers and attach the accompanied blade.



Invented by Cyrus Saladee in 1876 this brass skate contained an unusual placement of its four wheels. The front and rear wheels pivoted via springs which allowed for both turns and straight skating.

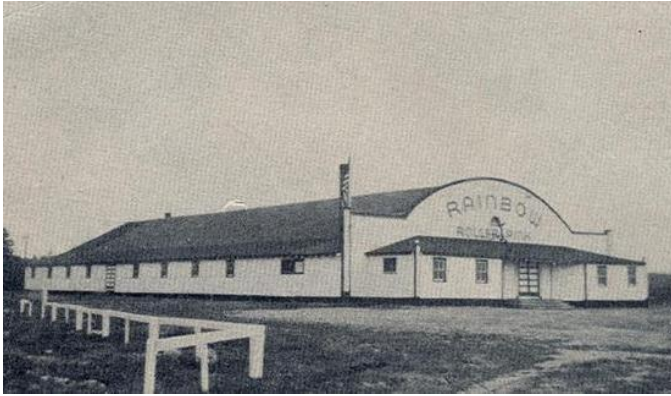


This Vineyard skate from the Winslow Company had three different models: A, B, and C. This B model from 1883 has a slight variation in the truck assembly. The Vineyard models became the most popular wooden skates by skating patrons.

The First Fifty Years illustrates over fifty early roller skates along with a short explanation. The reader takes the incredible journey on the evolution of the American roller skate. This book is available in the museum store for \$7. Please visit the museum or call to obtain your copy.

Rink Photo

Rainbow Roller Rink
Trenton, ME



New Members

Stephen Winbery
Stacy Orta
Fleming Family

Renewing Members

Bill and Tanya Hoefler
Rob and Nellie Lillie
Cecelia Kelley
Michael Nelson
Mary Hayes
Joline Zepcevski

Wish List

Hockey Equipment:

We dedicate much space in our gallery and our archives to roller hockey. Most of our information is via programs and photographs, items easily stored and preserved. What we would like to enlarge is our hockey equipment collection.

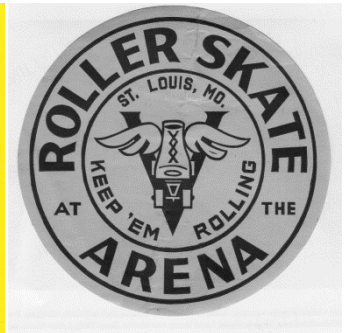
While sticks and skates are great and make up the majority of our equipment collection, we hope for some other types as well. Especially sought after is equipment from the goalie, namely his/her padding. We would like a variety of modern and historical safety equipment. Large leather shin guards and gloves would be excellent. A variety of masks worn by the goalie would also accentuate our collection.



Example of equipment

Rink Sticker Collection

The museum has an extensive collection of roller skating rink stickers. Many skating rinks used to produce stickers as both an advertisement and fun way to for skaters to interact with one another, comparing the different location in which they skated. These were even traded as collectibles both informally and formally, under the Universal Roller Skating Sticker Exchange founded in 1948. Each newsletter, we will feature different rink stickers. Here are a few examples of the numerous stickers in the collection and on display at the National Museum of Roller Skating.



Thanks for supporting the museum!

